

State of Wyoming Corner Record

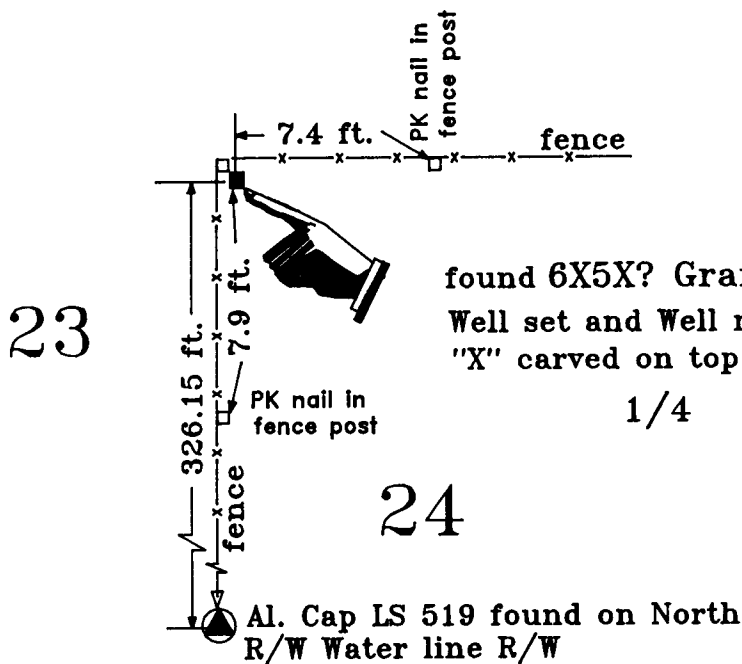
(In compliance with the CORNER PERPETUATION AND FILING ACT, Wyoming Statutes, 1977, Section 36~11~101, et seq., and the Rules and Regulations of the Board of Registration for Professional Engineers and Professional Land Surveyors)

The reverse side of this form may be used if more space is needed.

The Record of the original survey and the citation of the source of the historical information (if the corner is lost or obliterated). The description of the corner monumentation evidence as found and/or the monument and it's accessories as established to perpetuate the location of this corner. A sketch of the relative location of this Monument, accessories, and reference points with the course and distance to adjacent corner (s) (if determined during this Survey). The Method and Rationale used for the reestablishment of lost and obliterated corner.

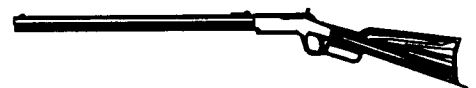
G.L.O.:North between Sec. 23 & Sec. 24, 28.50 ch. to Wagon Road bears E & W; 40.00 ch. set 15 X 9 X 8 granite boulder for 1/4 Sec. corner; 43.00 ch to bank of branch of Crow Creek, 15 lk. wide bears NE.....

Found Granite stone 6"X5"X ? well set in fence corner being N 00°40'22" W a distance of 326.15 from a 5/8" rebar with an Aluminum Cap marked LS 519 on the Northerly R/W of a 60' Water line R/W for the City of Cheyenne, said stone is 7.4 ft. Westerly from a PK nail in the top of a fence post & Northerly 7.9 ft. from a PK nail set in the top of a fence post.

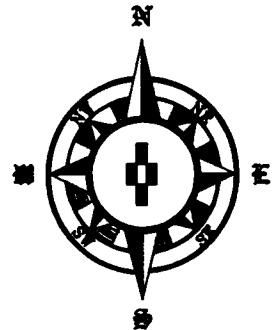


found 6X5X? Granite Stone
 Well set and Well marked
 "X" carved on top
 1/4

T. 14 N. R. 69 W.
 6th P.M.



Laramie County, Wyoming



Date of Field Work: Nov. A.D. 1999 Office Reference: JFRANCIS

Cross Index Diagram

T.14 N. R.69 W. of the 6th P.M.

	1	2	3	4	5	6	7	8	9	10	11	12	13	14	15	16	17	18	19	20	21	22	23	24	25
A																									
B																									
C																									
D																									
E																									
F																									
G																									
H																									
J																									
K																									
L																									
M																									
N																									
O																									
P																									
Q																									
R																									
S																									
T																									
U																									
V																									
W																									
X																									
Y																									
Z																									

Firm/Agency, Address
 Terrestrial Surveying & Mapping Co.
 "Your Friendly Neighborhood Surveyor"
 1127 Terry Ranch Road
 Cheyenne, Wyoming 82007
 Telephone Number: (307) 634~9360

This Corner Record was prepared by me or under my direction and supervision.

SEAL & SIGNATURE

